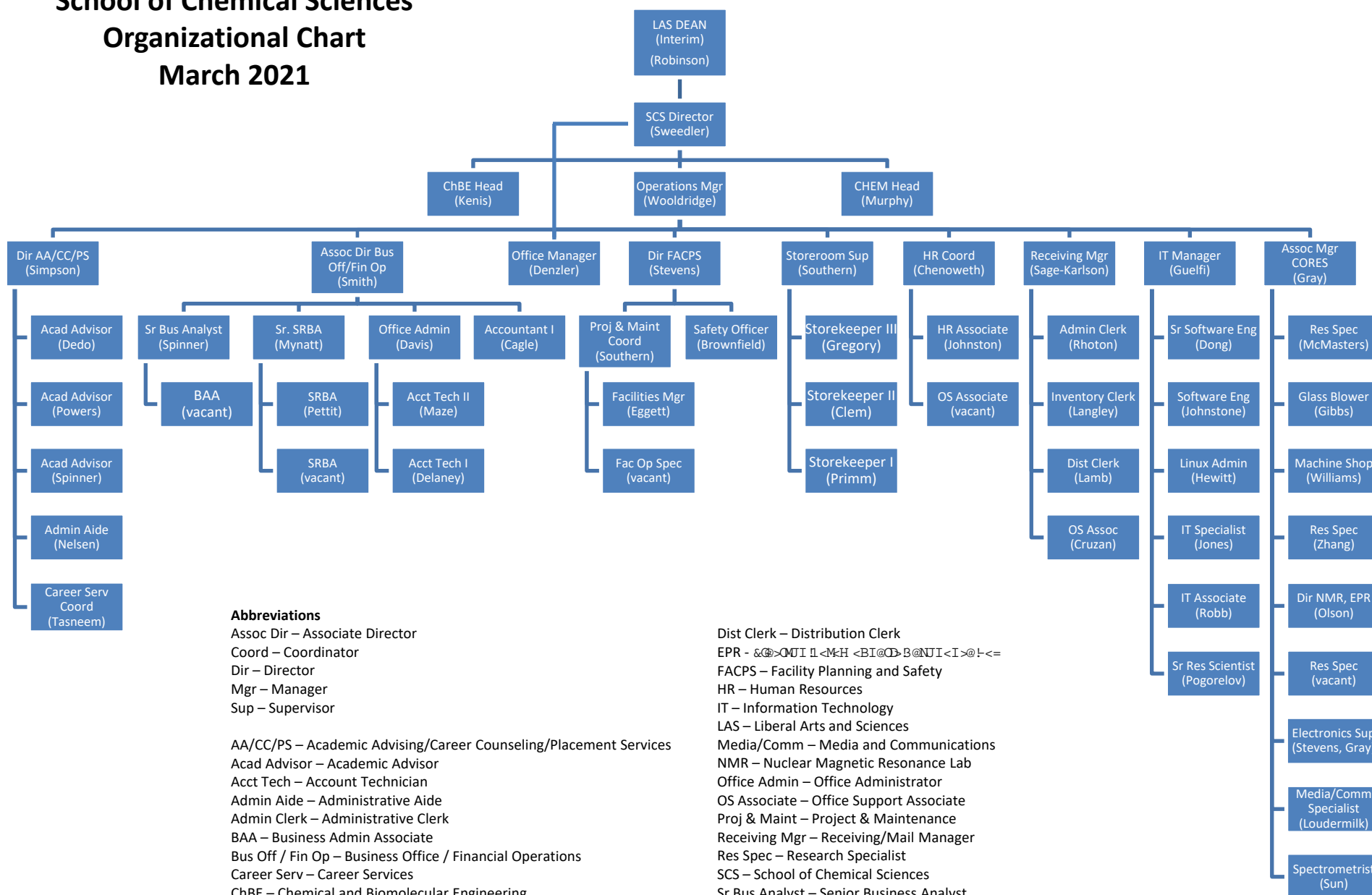


# School of Chemical Sciences Organizational Chart March 2021



## Abbreviations

Assoc Dir – Associate Director  
Coord – Coordinator  
Dir – Director  
Mgr – Manager  
Sup – Supervisor

AA/CC/PS – Academic Advising/Career Counseling/Placement Services  
Acad Advisor – Academic Advisor  
Acct Tech – Account Technician  
Admin Aide – Administrative Aide  
Admin Clerk – Administrative Clerk  
BAA – Business Admin Associate  
Bus Off / Fin Op – Business Office / Financial Operations  
Career Serv – Career Services  
ChBE – Chemical and Biomolecular Engineering  
CHEM – Chemistry  
CORES – Center of Research & Educational Support (Service Facilities)

Dist Clerk – Distribution Clerk  
EPR – Electron Paramagnetic Resonance  
FACPS – Facility Planning and Safety  
HR – Human Resources  
IT – Information Technology  
LAS – Liberal Arts and Sciences  
Media/Comm – Media and Communications  
NMR – Nuclear Magnetic Resonance Lab  
Office Admin – Office Administrator  
OS Associate – Office Support Associate  
Proj & Maint – Project & Maintenance  
Receiving Mgr – Receiving/Mail Manager  
Res Spec – Research Specialist  
SCS – School of Chemical Sciences  
Sr Bus Analyst – Senior Business Analyst  
Sr Res Scientist – Senior Research Scientist  
Sr Software Eng – Senior Software Engineer  
SRBA – Sponsored Research Business Analyst