



HOLIDAY Closures

ALL SCS CORES FACILITIES
will be closed

December 24 - January 4
and will reopen January 5,
2022

unless otherwise listed below:

Graphic Services

Closed December 20 - January 4

Mass Spec

Bruker Ultraflex, Autoflex, Waters Quattro Ultima and ZMD will be available 24/7 for the self-service users during the break.

Microanalysis

ITC walkup will be available 24/7, 3 Flex walkup users need to make prior arrangements for walkup use during break via email:
scs-microlab@illinois.edu

NMR

All walkup instruments will be available 24/7.

X-Ray

Miniflex walkup will be available 24/7. 24 hr access Duo users may collect data over break, but they need to make arrangements prior to collection. Please make arrangements with Danielle via email:
dgray@illinois.edu

Learn something new in 2022!

The SCS Glass Shop Course is open for training!

Ever wanted to learn how to make scientific glassware or just wanted to learn to fix your broken glassware?

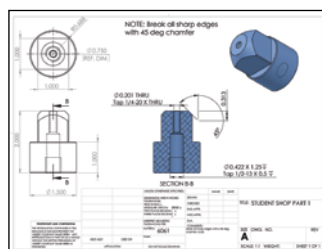
This course will be taught over 3, 3-hour sessions and will be limited to 2 people per course. Training will cost \$79.94. After training you may use the Glass Shop under supervision and by reservation at \$10.70/hr + materials costs.

If you are interested, please contact Andy Gibbs at agibbs@illinois.edu

Note: Please be aware that masks cannot be worn while safely blowing glass. The bench where you will learn to work glass does have a high turnover exhaust hood above the workstation.



The SCS Student Machine Shop is open for student training.



The training will consist of Machine shop Safety and the use of the lathe & Milling machines. Training is limited to 3 people per time slot and will require a minimum of five 2-hour sessions.

Hours of availability will be 8:00 am -12:00 pm and 1:00 pm - 3:30 pm Monday - Friday. Training cost will be \$132.43.

If you are interested, please contact David Williams at dwillms@illinois.edu

The X-ray facility is cleaning out their refrigerators and cold rooms.

We are going to dispose of all old crystallization trays and screens as well as old stock protein solutions in the NL 77 Biocrystallization cold rooms, refrigerators and freezers. We are trying to contact all of our users directly, but if you have something in NL77 that you would like us to keep, please contact Toby Woods at tobyw@illinois.edu. We hope to have the cold rooms and refrigerators clean by the end of January 2022.

