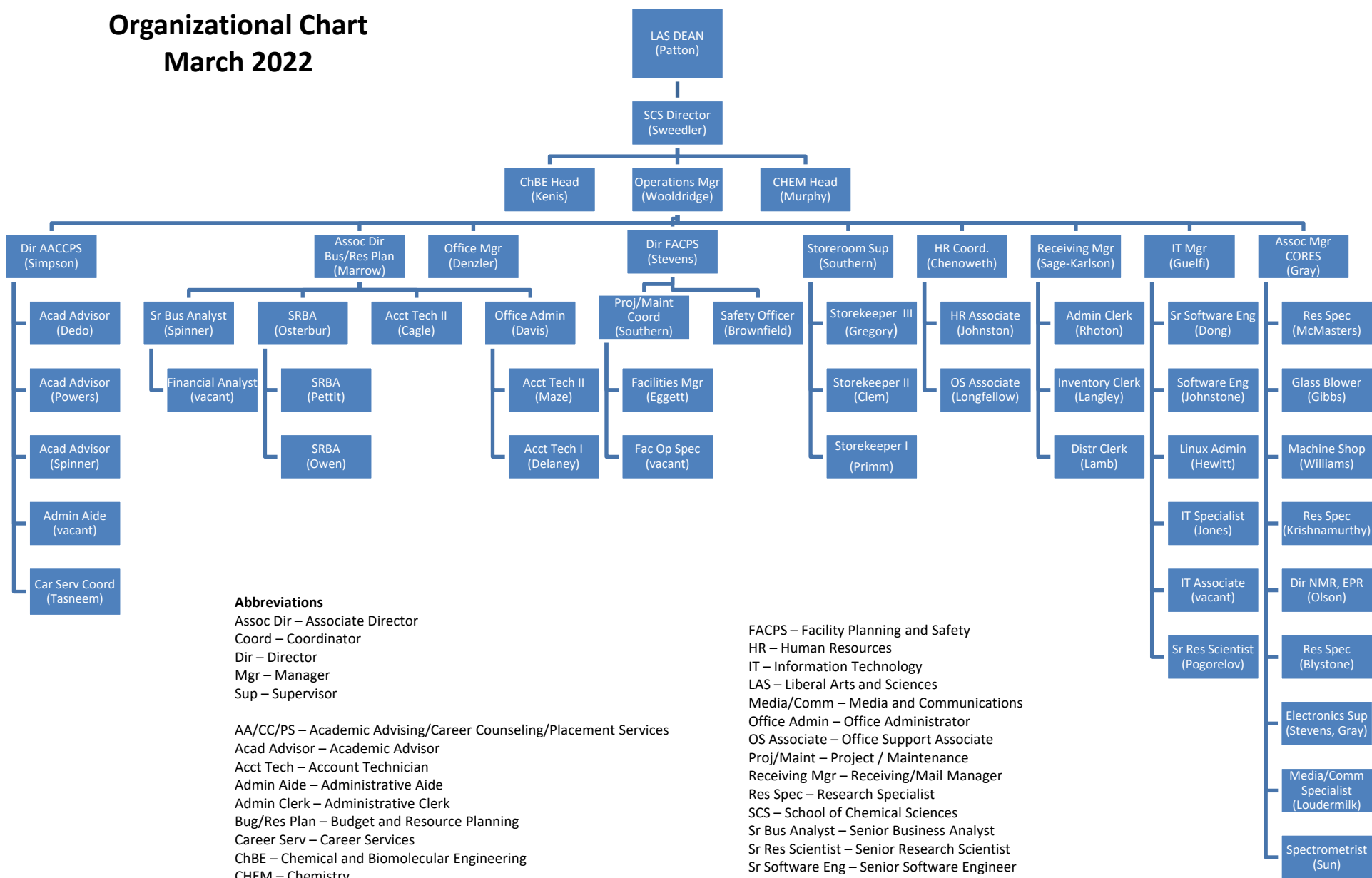


School of Chemical Sciences Organizational Chart March 2022



Abbreviations

Assoc Dir – Associate Director
 Coord – Coordinator
 Dir – Director
 Mgr – Manager
 Sup – Supervisor

AA/CC/PS – Academic Advising/Career Counseling/Placement Services
 Acad Advisor – Academic Advisor
 Acct Tech – Account Technician
 Admin Aide – Administrative Aide
 Admin Clerk – Administrative Clerk
 Bug/Res Plan – Budget and Resource Planning
 Career Serv – Career Services
 ChBE – Chemical and Biomolecular Engineering
 CHEM – Chemistry
 CORES – Center of Research & Educational Support (Service Facilities)
 Dist Clerk – Distribution Clerk

FACPS – Facility Planning and Safety
 HR – Human Resources
 IT – Information Technology
 LAS – Liberal Arts and Sciences
 Media/Comm – Media and Communications
 Office Admin – Office Administrator
 OS Associate – Office Support Associate
 Proj/Maint – Project / Maintenance
 Receiving Mgr – Receiving/Mail Manager
 Res Spec – Research Specialist
 SCS – School of Chemical Sciences
 Sr Bus Analyst – Senior Business Analyst
 Sr Res Scientist – Senior Research Scientist
 Sr Software Eng – Senior Software Engineer
 SRBA – Sponsored Research Business Analyst