



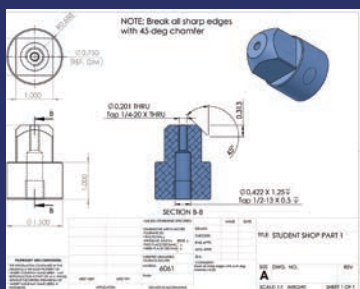
Great learning opportunities offered by CORES facilities



Student Machine Shop TRAINING



Participants are trained in machine shop safety and the use of the lathe & milling machines. A minimum of five 2-hour sessions is required to be completed. Training is limited to 3 people per time slot. Training cost is \$132.43 per participant.



Hours of availability:

Monday - Friday
8:00 am - 12:00 pm
or 1:00 - 3:30 pm

>> Contact David Williams at dwillms@illinois.edu

Glass Shop TRAINING COURSE

Ever wanted to learn how to make scientific glassware or just wanted to learn to fix your broken glassware?

The Glass Shop Training Course consists of three, 3-hour sessions and is limited to 2 people per course. Training cost is \$79.94 per participant.

After completing the training course, participants may use the Glass Shop under supervision and by reservation at \$10.70/hr + materials costs.

>> Contact Andy Gibbs at agibbs@illinois.edu



Note: Please be aware that masks cannot be worn while safely blowing glass. The bench where you will learn to work glass does have a high turnover exhaust hood above the workstation.

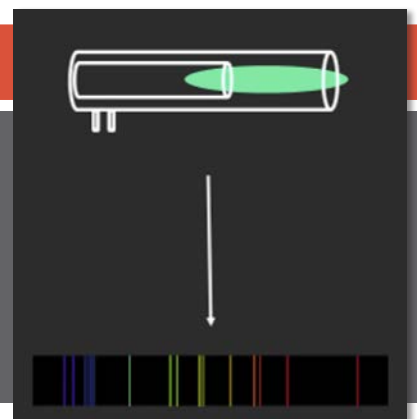
There is still time to sign up!

Sign up deadline: July 29, 2022

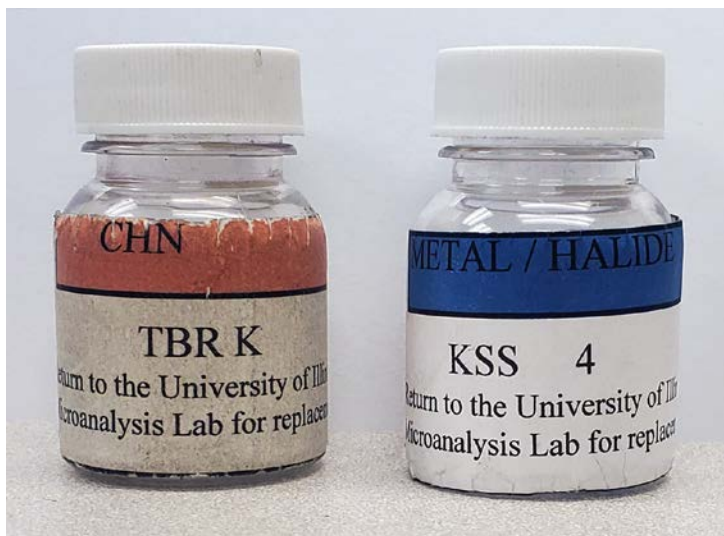
This 3-day workshop will cover the fundamental principles, sample preparation, data collection, and data analysis for both ICP OES and MS techniques. Space is limited, so sign up soon. The cost of the workshop will be \$40.28/person.

>> Contact Ashley Blystone (blystone@illinois.edu) for details and to sign up.

ICP Analysis WORKSHOP
Microanalysis Lab
August 8 - 10



Microanalysis Requests the Return of Air Sensitive Jars



Please return unused air sensitive jars to the Microanalysis Facility. Capsules that sit for excessive periods of time can be exposed to chemicals that cause corrosion and mass changes to the capsules that adversely effect the quality of your elemental analysis. It is best to have new capsules when planning to submit air sensitive materials for analysis.



Get ready to put your best face forward

After 2 year pandemic hiatus, the SCS Student, Faculty & Staff Photo Shoot is set to return.


Graphic Services is planning once again to host the one-day, walk-in style portrait photo shoot for School of Chemical Sciences students, faculty and staff, barring any new pandemic restrictions in August ahead of the start of the fall semester.

The event is open to anyone within the School of Chemical Sciences. This is your opportunity to get a professionally photographed headshot, no appointment or registration required.

An announcement with the date, walk-in hours and location will be sent out School-wide once all the arrangements have finalized. **We can't wait to see your smile!**

COMING SOON: New FBS Sample Submission System Rollout for Mass Spec Lab

The University of Illinois



ILLINOIS

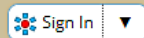
UNIVERSITY OF ILLINOIS AT URBANA-CHAMPAIGN

Welcome to our **Priority Software®** BA and FBS web portal.

Ligon using:

☒ NetID


☐ Email Address




Other Options:

[Contact Us](#)

Browse/Request Access

 [FBS Portal](#)

 [BA](#)

Warning: This system is for authorized users only. Use of this system without authority, or in excess of granted authority, is illegal and will be treated as such. Such use may result in civil fines, termination of employment, criminal charges, or other legal penalties. Usage of this site is audited and monitored. All persons are hereby notified that the use of this system constitutes consent to such monitoring and auditing.

You are connecting from 130.126.42.85 at 4-20-2022 3:38 PM

Priority Software® is a registered trademark of Priority Software, Inc. BA and FBS are trademarks of Priority Software, Inc. Copyright © 2022 by Priority Software, Inc. All rights reserved.

Over the next several weeks we will be rolling out a new sample submission system called, FBS in the Mass Spectrometry Laboratory.

The FBS portal allows direct communication with the staff about your samples as well as a way to monitor the sample's progress and receive the sample results from the portal.

Users are being added to the new system research one group at a time.

When your group has been added:

- **You will receive an invitation** to participate in FBS that will use your university netid and password with 2FA authentication to log into the system.
- **You will also receive an email** from Danielle Gray containing Knowledge Base articles with directions on how to fill out the new submission forms and how to check in your samples.

Please continue to use the old sample submission system until you have been invited to participate in the new system.