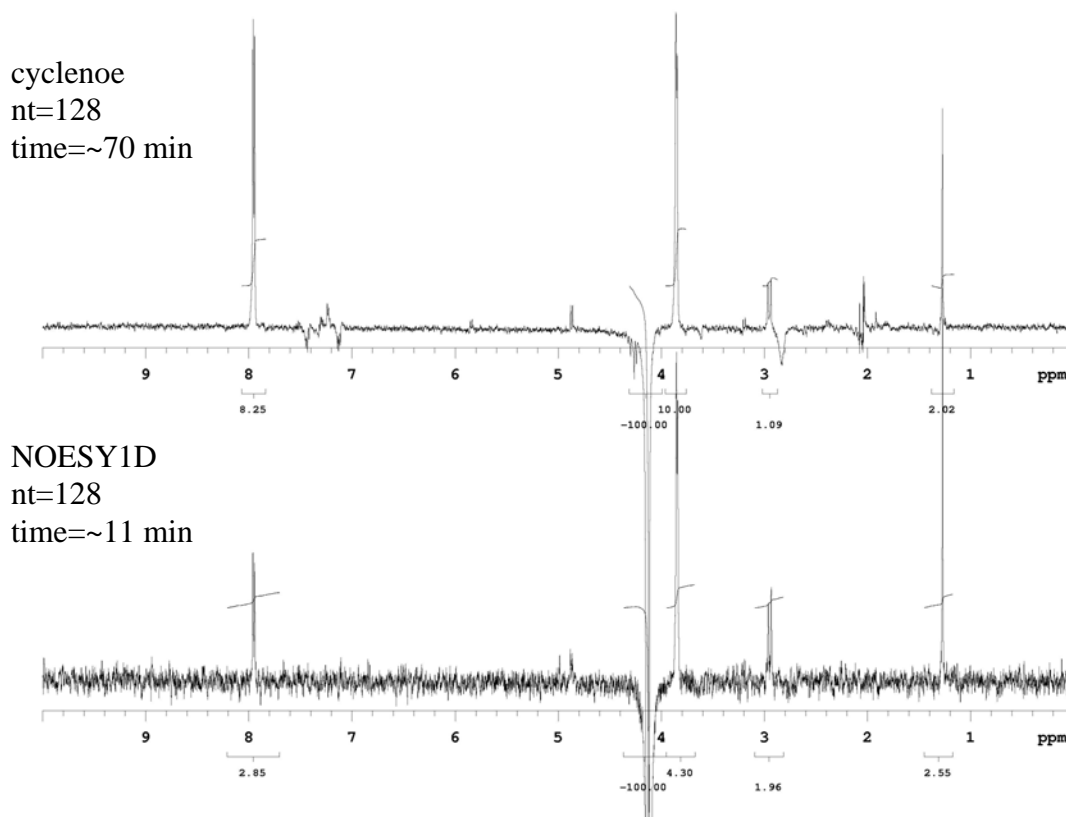


NOESY1D-(DPFGSE NOE) Experiment for Measurement of Transient NOE's

NOESY1D is the Varian implementation of the 1D NOE experiment using pulsed field gradients and selective pulses developed by Shaka et al. At the heart of the experiment is a double-pulsed-field-gradient-spin-echo (DPFGSE) pulse sequence that achieves selective spin inversion effectively and cleanly.

It is important to recognize that NOESY1D is a transient NOE experiment, which differs from the traditional steady-state NOE experiment (cyclenoe on Varian). In a steady-state NOE experiment, like cyclenoe, a specific resonance (i.e. peak in the spectrum) is saturated by low power RF saturation for a designated time (sattime) and a percent increase (or decrease) in the spectrum relative to a reference spectrum is observed. During the saturation time, the NOE's will reach an equilibrium value. In contrast, NOESY1D employs a series of pulses and gradients to invert a particular spin, a mixing time to allow the NOE to develop, and a read pulse to obtain a NOE spectrum. Therefore, an equilibrium value for the NOE's is not obtained. NOE's obtained from transient NOE experiments are generally lower in intensity (38% max vs. 50% for small molecules) and their relative intensities not directly comparable to steady-state NOE's.

An example of a steady-state cyclenoe and a NOESY1D experiment are shown below. With the same number of scans, cyclenoe gave 2 to 3 times the S/N. However,



because the cyclenoe experiment requires the saturation time to be greater than the longest $^1\text{H } T_1$, the total time to acquire the spectrum was ~70 minutes for cyclenoe and ~11 minutes for NOESY1D. Furthermore, there are essentially no subtraction artifacts in the NOESY1D spectrum while the cyclenoe spectrum has obvious artifacts (e.g. between 7 to 7.5 ppm and around 2 ppm). The combination of very low artifacts and faster per cycle repetition make the NOESY1D experiment a good choice for routine qualitative NOE determination.

Quantification of the % enhancement, which is a typical value reported for NOE's, is not readily obtained from NOESY1D. Since the target resonance is not saturated with NOESY1D but is inverted, there will be relaxation of that signal during the mixing time. Therefore, setting the inverted peak to 100% as is typical with traditional steady-state NOE's is not appropriate. Further experiments are necessary to obtain reliable quantitative numbers.

Comparison of Transient (NOESY1D) and Steady State NOE (cyclenoe) Experiments.

NOESY1D	cyclenoe
Optimum NOE when mixing time equals $^1\text{H } T_1$'s-quicker recycle time and more scans per unit time	Must have saturation time larger than longest $^1\text{H } T_1$'s
% NOE is less than and not directly comparable to traditional steady-state techniques. Quantification is difficult	Larger % NOE and better S/N for same number of scans. Quantification is straightforward
Relatively insensitive to calibration errors and instrument instability	Careful calibration is recommended and a stable instrument is necessary
Essentially no subtraction or other artifacts, which allows for measurement of long range NOE's	Subtraction artifacts are common and long range NOE's difficult to detect
Setup is quick and straightforward	Setup is a little more complicated
Can generate NOE build-up curve for distance calculations	Can not generate build-up curves

* * * * *

Explanation of Types of Commands Found in this Handout:

1. The vnmr software and the UNIX operating system are both case sensitive. This means that the computer distinguishes whether the letters are entered in upper case (i.e. CAPITALS) or lower case. The user must be careful to type the correct case for each letter in a command.

EXAMPLE: **jexp1** is not the same as **JEXP1**

2. Some commands are line commands and are typed in by the user followed by a hitting the RETURN key.

EXAMPLE: **su**

Hitting the RETURN key is assumed for all bold text.

3. Some commands are executed by clicking a mouse button with its pointer on a 'button' found on the screen. The execution of these commands is indicated by a two letter designation (LC {left click}, RC {right click}, or CC {center click}) followed by a word or words in bold that would appear in the 'button'.

EXAMPLE: **LC Main Menu**

This means to click the left mouse button with its pointer on the 'button' that says "Main Menu".

4. Some commands are executed by the mouse itself. These commands are indicated by the two-letter designation (LC, RC, or CC) and a description of what the user should do in parentheses.

EXAMPLE: **LC (at 6 ppm)**

This means to click the left mouse button with the mouse cursor at 6 ppm.

5. Parameters are entered by typing the parameter name followed by an equal sign, the value, and a return.

EXAMPLE: **nt=16 <rtn>**

* * * * *

Running the NOESY1D Experiment

Preliminaries:

- It is recommended to degas your sample prior to running the experiment because dissolved oxygen will decrease the NOE. If necessary, you should also filter the sample.
- **Insert** and **Lock** as usual.
- Turn spinning **off** and shim as usual.
- Since NOE's are temperature dependent, it is recommended to run the experiment at a slightly elevated temperature. Refer to VT operation handout for adjusting spectrometer temperature.

Creating the Selective Pulses:

jexp1 join experiment 1

Setup and run a standard ^1H experiment.

For optimal performance, you can determine, record your 90° proton pulse, and set $\text{pw}90 = \text{determined value}$.

tpwr?	note this value. It will be needed later
pw90?	note this value. It will be needed later
mf(1,2)	move the ^1H FID from exp1 to exp2
jexp2	join experiment 2
wft	Fourier transform FID
NOESY1D('ds')	Setup NOESY1D parameters with interactive pulse selection
pfgon?	make sure that this is $\text{pfgon} = \text{'nny'}$

Expand around first resonance to be inverted. Center cursors around desired resonance ensuring that the full resonance is between the cursors. Then,

LC Select	selects current region between cursors for selective inversion
------------------	--

Repeat for all desired resonances. When completed,

LC Proceed	calculates shaped pulses and completes NOESY1D setup
-------------------	--

You will need to answer the following questions:

Enter reference 90 degrees pulse width (usec):

Enter your determined pw90 value or value in exp1 from pw90? for example, **8.4**

Enter reference power level:

Enter value determined earlier in exp1 by tpwr? command

da displays array. Look to make sure that all your desired resonances have been selected. They will appear with names similar to NOESY1D_5_27p.RF, where the numbers refer to the chemical shift of the resonance.

If, at any point, you make an error, it is easiest to restart from **mf(1,2)**.

nt=128 or desired number set number of scans. MUST BE A MULTIPLE OF 8

mix? check mixing time. mix=0.5 is the default value and is optimal for short-range interactions of small to medium-sized molecules. If you are looking for long-range interactions, mixing times comparable to the $^1\text{H } T_1$'s can be used

time check time

Make sure the sample is not spinning as gradient selected experiments like NOESY1D do not work with spinning.

go acquire spectra

Data Manipulation:

wft Fourier transform your data

vp=80 move the spectrum up

Phase the largest peak (this is the irradiated peak) so that it is negative (i.e. it points down). The small NOE peaks will be opposite phase to the irradiated peak.

dssa view all spectra in array

To view individual spectra, type *ds(#)*, where # is the number of the desired spectrum. For example, I decided to do 5 different NOE experiments irradiating at 9, 6, 5, 3, and 1 ppm. I selected the peaks in the order given, which means that typing, **ds(1)**, will give me

the spectrum with irradiation at 1 ppm. Typing **ds(4)** would give me the spectrum with 3 ppm irradiation.

Integration and peak picking are done exactly like ^1H spectra. Remember that the integrated values are NOT directly comparable to traditional steady-state NOE's. It is best to use the values qualitatively.

Printing your NOESY1D Spectra:

To print all spectra in the array:

dssa

look to see if the spectra overlap. If so, type **ds(1)** and reduce the scale of the spectrum. Type **dssa**. If necessary, readjust by typing **ds(1)**, adjusting scale, and typing **dssa**.
plots all spectra

pl('all') pscale page

To print individual spectra:

ds(spectrum#)

for example, ds(1)

Phase, peak pick, and integrate as desired.

pl pir pscale ppf page

print spectrum, scale, integrals, and peak frequencies